

# Suncruiser

**WINNEBAGO**



## *Why Suncruiser?*

- Corian® countertops and mosaic tile backsplash
- Powered king bed (37F, 38Q)
- Infotainment Center with Rand McNally RV GPS and dual touchscreen monitors
- Blu-ray™ Home Theater Sound System
- TrueAir® maximum comfort air conditioning
- Powered patio awning with LED lighting
- Motoraid supplemental hot water and heating system
- Available solar panel/battery charger
- Available JBL® Premium Cab Sound System





On the Cover: 38Q Sandstone Full-Body Paint

38Q Tribeca with Coffee-Glazed Honey Cherry Cabinetry

## Take it Easy

You've earned the right to sit back and relax once in a while, and no Class A motorhome lets you travel in more grace and style than the Winnebago® Suncruiser.® Three floorplans boast four new interior décor options that will delight the senses and pair perfectly with the high-gloss Corian® countertops and MCD solar/blackout roller shades. Soft Ultraleather™ furniture such as the Rest Easy® Extendable

Sectional Sofa (38Q) and new lounge chair (NA 35P) are as roomy and comfortable as they are stylish. The exterior is equally stunning with premium full-body paint, stylized aluminum wheels, and a powered patio awning with LED lighting. The Suncruiser delivers the luxury amenities and impressive storage capacity you'd expect in a diesel in a low-maintenance Class A gas motorhome.



### Recognized Quality

The Recreation Vehicle Dealer Association annually rates RV manufacturers and awards the Quality Circle Award to manufacturers that provide exceptional products, service and support. Winnebago Industries is proud to be the only manufacturer that has received this award every year since its inception.





38Q Tribeca with Coffee-Glazed Honey Cherry Cabinetry

Your Suncruiser is designed to get you comfortably to your next adventure and give you an incredible space to wind down when the day is done. To that end, we started with the incredible reclining Rest Easy sofa and added a moveable hoop-base lounge chair in the 37F and 38Q. Then we included an entertainment center (35P, 38Q), an HDTV, Blu-ray™ Home Theater Sound System, and an electric fireplace (38Q). MCD solar/blackout roller shades are included to help you set the perfect mood. They adorn the frameless, dual-pane Contour™ windows that not only look great, but also provide excellent thermal efficiency that helps the TrueAir® residential central air conditioning work at an even higher performance level.



MCD Solar/Blackout Roller Shades



38Q Passenger Seat Reclined with Footrest





38Q Rest Easy Extendable Sectional Sofa



38Q Rest Easy Extendable Sectional Sofa with Ottomans



38Q Rest Easy Extendable Sectional Sofa as Bed



38Q Glide & Dine Dining Table



38Q Fireplace with HDTV



38Q Glide & Dine Dining Table Extended with Chairs



38Q Glide & Dine Workstation



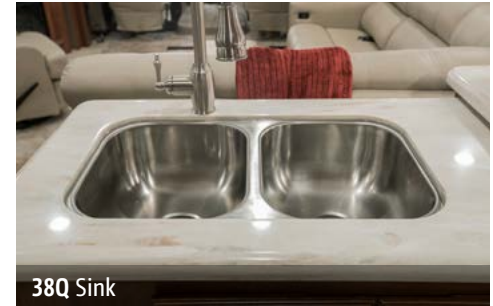
38Q Glide & Dine Storage



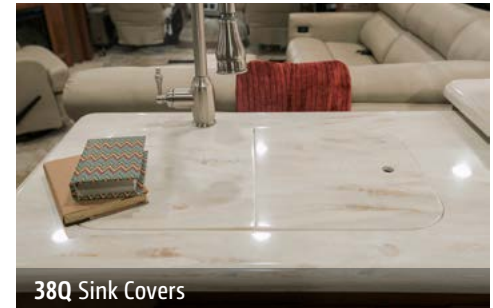


38Q Galley

A wide, Corian solid-surface countertop with a high-gloss finish and matching sink and range covers gives the galley a “wow” factor that you and your guests will love. The impressive list of appliances brings it to an elite level that includes a microwave/convection oven and a French door residential refrigerator/freezer with an icemaker and water dispenser (standard 38Q, available 37F). Your finest culinary creations deserve an elegant setting, which is what you will find with the Glide & Dine™ dining table and chairs with a companion buffet (37F, 38Q).



38Q Sink



38Q Sink Covers



38Q Range



38Q Microwave/Convection Oven



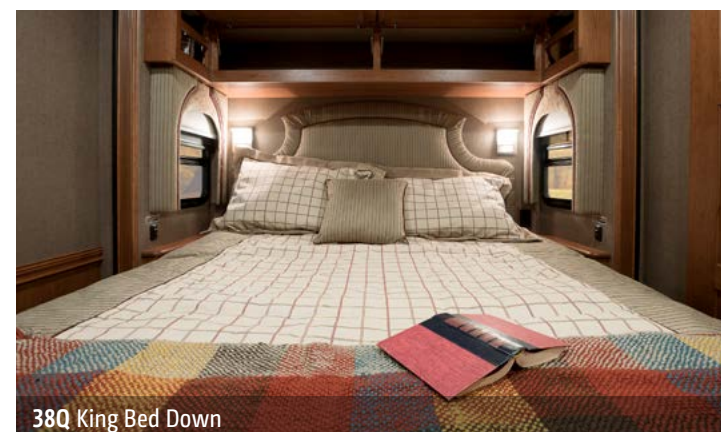
38Q Range Cover







Live like royalty in a master bedroom featuring an exclusive powered incline/recline king bed (NA 35P) with an InnoMax® Natural Reserve Freedom Air mattress that lets you dial in your precise firmness level on each side of the bed. With the press of a button, the head of the bed tips up to put you in perfect position to watch the bedroom HDTV. For those in need of a morning boost, select the 37F with Winnebago's coveted BIG Shower that delivers a refreshing start to your day.







38Q Vanity



38Q Bathroom



38Q Available Washer/Dryer





Take in every mile in style from the comfort of Ultraleather cab seats with six-way power assist adjustments on the driver's seat and a passenger dash workstation. Powered mirrors with defrost and sideview cameras put even novice motorhome drivers at ease behind the wheel. The cameras are incorporated into the Infotainment Center that includes two dash monitors with touchscreen controls for AM/FM stereo, Bluetooth®-connected devices, and SiriusXM® satellite radio (subscription not included). Rand McNally RV GPS provides accurate turn-by-turn voice guidance for safe, hands-free navigation. Upgrade to the JBL® premium 11-speaker surround system for an unmatched cab audio experience.



Passenger Dash Workstation with 12V USB Charging Ports

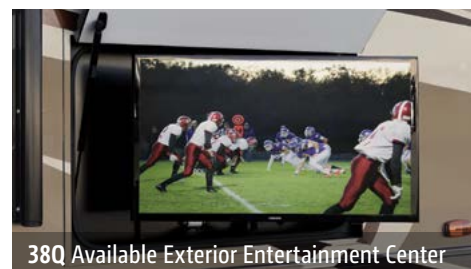


Powered Mirrors with Defrost and Sideview Cameras





Your Suncruiser is your home and you'll take pride in the way it looks thanks to the full-body paint of your choice, stylized aluminum wheels, and a powered patio awning with LED lights and a metal wrap. Storage compartments are spacious and well lit. And for those who want to catch the game while enjoying some fresh air, the available exterior entertainment center with an HDTV is a must-have addition.





## Fiberglass Roof

The crowned, one-piece fiberglass roof is backed by a 10-year limited parts-and-labor roof skin warranty.

**Thermo-Panel® Sidewalls** By layering fiberglass and high-density block foam insulation with welded aluminum support structures, we create some of the industry's strongest, most durable and lightweight sidewalls.

**E-Coating** An electrodeposition coating helps protect critical steel components.

**Embedded Steel** Metal substructures embedded into the sidewall provide solid attachment points to keep cabinets and appliances mounted securely in place.

**Solid Framework** Structural extruded aluminum creates an extremely strong and solid structural framework.

## Laser-Cut Tubing

Precision laser cutters create precise joints in structural steel that are stronger and require less welding.

## Interlocking Joints

Specially engineered interlocking joints connect the floor, sidewalls and roof where competitors often rely on simple screws to bear the weight.

**SUPER  
STRUCTURE**  
BUILT TO LAST

Every coach—from our smallest Class C to our largest diesel-pusher model—is built to Winnebago's® legendary SuperStructure® construction design. It's a process developed and refined over more than 50 years of building some of the strongest, most durable coaches in the industry.



## TESTING

Before rolling out of our factories, every coach undergoes an extensive 113-point inspection. Each coach also passes a high-pressure water test that simulates rain at a rate of 50-inches per hour to check for leaks. During the design process, our computer simulations, physical testing center, and rigorous test track ensure each model is built to last.



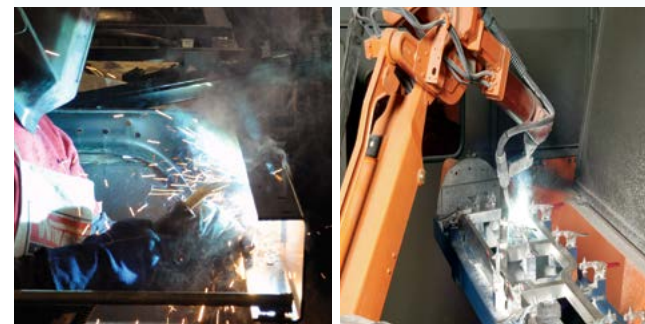
## DETAILS

At Winnebago, we treat the features you can't see with the same care as the ones you can. Look in the access panels of some of our competitors' coaches and you'll see loose insulation and wires haphazardly strewn about. Winnebago maintains a clean fit and finish throughout so your coach will last for the long haul.



## BUILT IN-HOUSE

We process and finish key aluminum parts. We rotocast our own plastic components. In fact, we manufacture most of our own parts so they are designed to fit the space, rather than fitting the space to an awkward off-the-shelf component size.



# SUPER STRUCTURE®

BUILT TO LAST

**W** Visit [BetterBuiltRVs.com](http://BetterBuiltRVs.com) to gain real insight into what goes into a Winnebago motorhome.

## TAKE A TOUR

We're proud of our processes, state-of-the-art facilities, and the people who make Winnebago number one. We invite you to visit our complex in Forest City, Iowa, for a firsthand look at the dedication and technology behind every motorhome we build.

Call (641) 585-6936 or (800) 643-4892 or visit us online at [WinnebagoInd.com/company/visit](http://WinnebagoInd.com/company/visit) for more information.



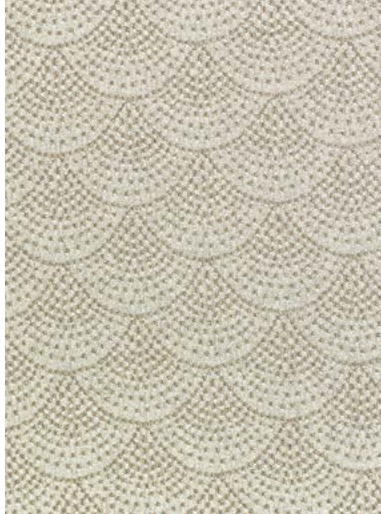


Choose from four fabric collections and three wood finishes.

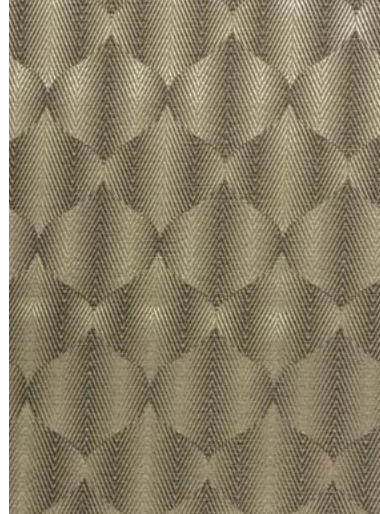
## Brooklyn



Ultraleather



Feature Fabric



Bedspread



Corian Countertop  
(Galley)



Vinyl Flooring



Coffee-Glazed  
Vienna Maple



Coffee-Glazed  
Honey Cherry



Glazed Driftwood

Winnebago® reserves the right to change décor materials and specifications without notice or obligation.



Choose from four fabric collections and three wood finishes.

## Greenwich



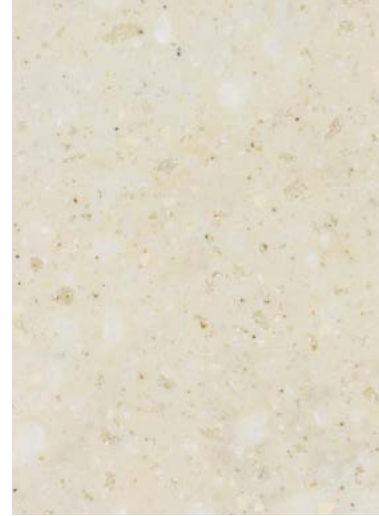
Ultraleather



Feature Fabric



Bedspread



Corian Countertop  
(Galley)



Vinyl Flooring



Coffee-Glazed  
Vienna Maple



Coffee-Glazed  
Honey Cherry



Glazed Driftwood

Winnebago® reserves the right to change décor materials and specifications without notice or obligation.



Choose from four fabric collections and three wood finishes.

## Manhattan



Ultraleather



Feature Fabric



Bedspread



Corian Countertop  
(Galley)



Vinyl Flooring



Coffee-Glazed  
Vienna Maple



Coffee-Glazed  
Honey Cherry



Glazed Driftwood

Winnebago® reserves the right to change décor materials and specifications without notice or obligation.



Choose from four fabric collections and three wood finishes.

## Tribeca



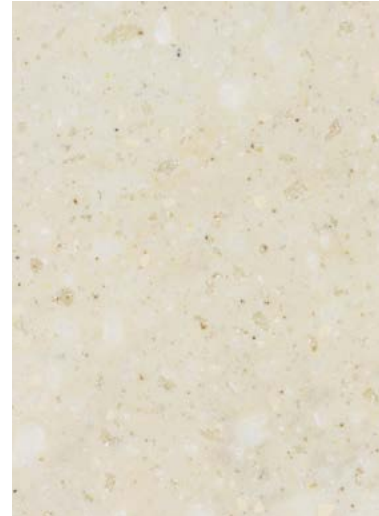
Ultraleather



Feature Fabric



Bedspread



Corian Countertop  
(Galley)



Vinyl Flooring



Coffee-Glazed  
Vienna Maple



Coffee-Glazed  
Honey Cherry



Glazed Driftwood

Winnebago® reserves the right to change décor materials and specifications without notice or obligation.



Full-body paint comes standard in the style of your choice.



**Amber**  
FULL-BODY PAINT



**Black Walnut**  
FULL-BODY PAINT



**Pewter Pearl**  
FULL-BODY PAINT



Full-body paint comes standard in the style of your choice.



**Sandstone**  
FULL-BODY PAINT



**Sapphire**  
FULL-BODY PAINT



**Titanium**  
FULL-BODY PAINT

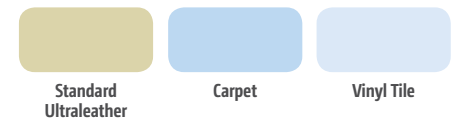
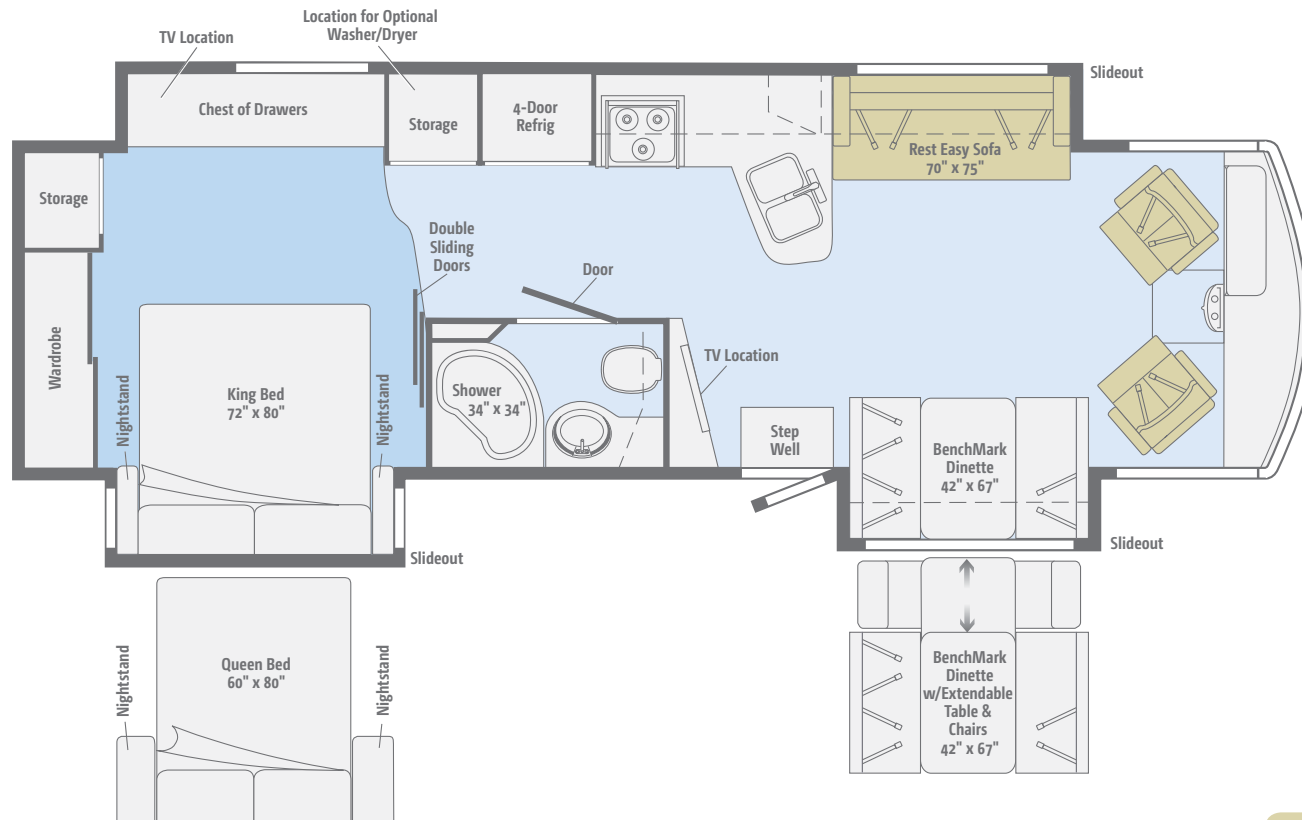




Click here to explore this floorplan's web page.

## 35P

The full-wall slideout makes room for a large L-shaped galley and plenty of bedroom storage with space for an available washer/dryer.



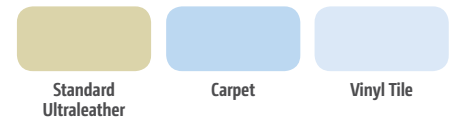
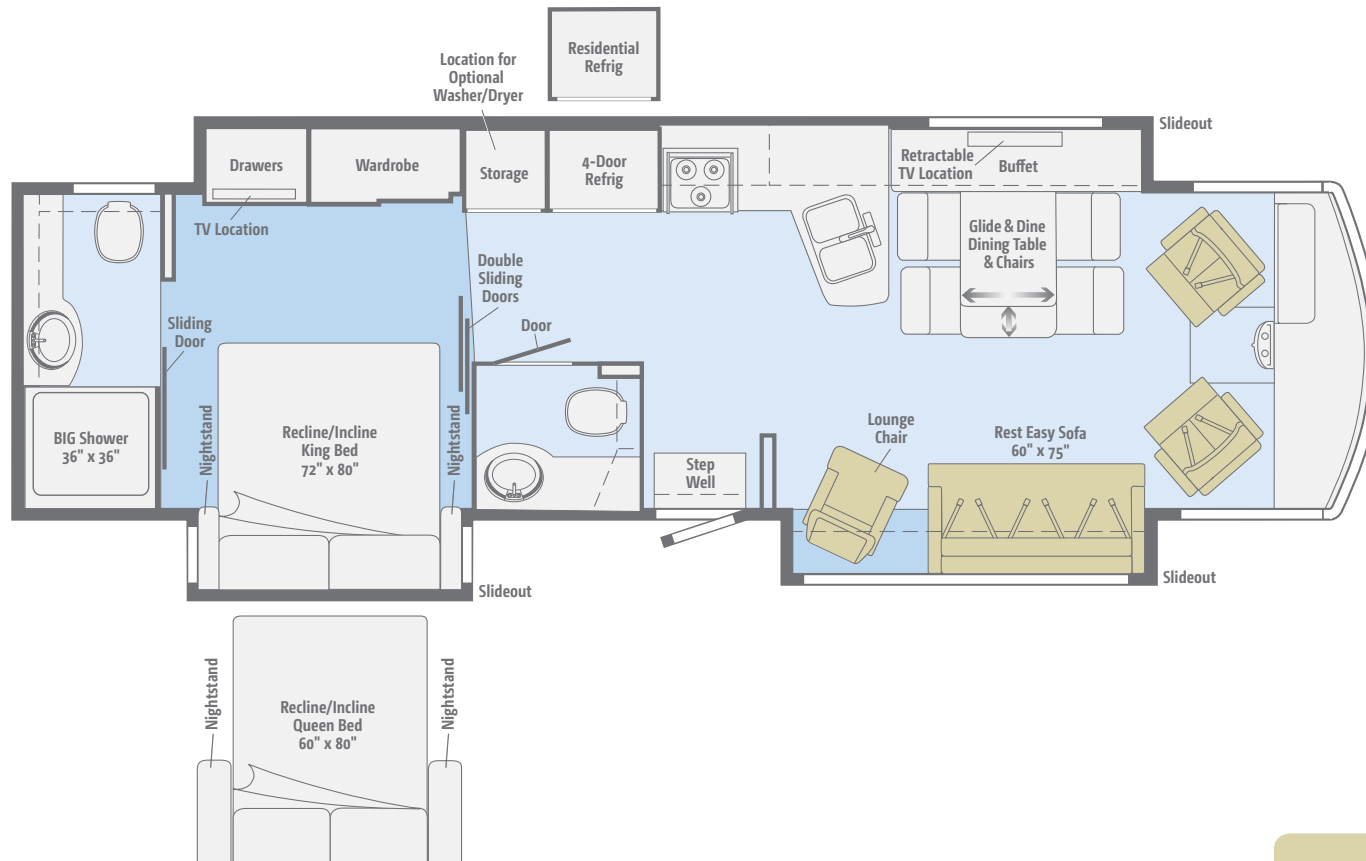




Click here to explore this floorplan's web page.

## 37F

Go big with a powered king bed, 1.5 bathrooms, the exclusive BIG Shower, and a full-wall slide housing a dining table/buffet with a giant retractable HDTV.



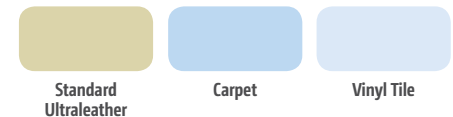




Click here to explore this floorplan's web page.

## 38Q

The Rest Easy Extendable Sectional Sofa, reclining lounge chair, and Ultraleather cab seats come together to form the ultimate lounge.





Weights & Measures	35P	37F	38Q
Length	35'6"	37'6"	38'8"
Exterior Height <sup>1</sup>	12'5" <sup>A</sup> /12'6" <sup>B</sup>	12'6"	12'6"
Exterior Width <sup>2</sup>	8'5.5"	8'5.5"	8'5.5"
Exterior Storage <sup>3</sup> (cu. ft.)	125.5	121.7	121.9
Awning Length	17'	18'	14'
Interior Height	7'	7'	7'
Interior Width	8'0.5"	8'0.5"	8'0.5"
Freshwater Tank Capacity <sup>4</sup> (gal.)	78	78	63
Water Heater Capacity (gal.)	10	10	10
Holding Tank Capacity - Black/Gray <sup>4</sup> (gal.)	43/57	52/71	75/79
LP Capacity <sup>5</sup> (gal.)	28	28	28
Fuel Capacity (gal.)	80	80	80
GCWR <sup>6</sup> (lbs.)	26,000 <sup>A</sup> /30,000 <sup>B</sup>	30,000 <sup>B</sup>	30,000 <sup>C</sup>
GVWR (lbs.)	22,000 <sup>A</sup> /24,000 <sup>B</sup>	24,000 <sup>B</sup>	26,000 <sup>C</sup>
GAWR - Front (lbs.)	8,000 <sup>A</sup> /9,000 <sup>B</sup>	9,000 <sup>B</sup>	9,000 <sup>C</sup>
GAWR - Rear (lbs.)	15,000 <sup>A</sup> /15,500 <sup>B</sup>	15,500 <sup>B</sup>	17,500 <sup>C</sup>
Wheelbase	228"	248"	248"
Seating Capacity	7	5	4

A Ford F53 22,000-lb. Chassis w/22.5" tires

B Ford F53 24,000-lb. Chassis w/22.5" tires

C Ford F53 26,000-lb. Chassis w/22.5" tires

## Ford® F53 Chassis

**22,000-lb. Chassis 6.8L V10 SEFI Triton® engine, TorqShift™ 6-speed automatic overdrive transmission w/tow/haul, Hydro-Max brakes w/4-wheel ABS, 175-amp. alternator (35P)**

**24,000-lb. chassis (37F)**

**26,000-lb. chassis (38Q)**

**7-pin trailer wiring**

**Trailer hitch® 5,000-lb. drawbar/500-lb. maximum vertical tongue weight**

**Stylized aluminum wheels**

**Hydraulic leveling jacks w/3-position controls**

## OPTIONAL EQUIPMENT

**24,000-lb. chassis (35P)**

**Rear valve stem extensions**

## Cab Conveniences

**Infotainment Center with Rand McNally RV GPS 10.4" touch screen color monitor w/split screen function, 2nd monitor, Rand McNally RV GPS safe & easy routing, amenities & tools, trips & content, turn-by-turn voice guidance, AM/FM radio, handheld remote, SiriusXM™ (subscription not included), compass, outside temperature, iPod/iPhone® audio integration, Bluetooth™ color rearview camera**

**Chassis/house battery radio power switch**

**Cab seats adjustable armrests, fixed lumbar support, multi-adjustable slide/recline/swivel**

**6-way power driver seat**

**3-point seat belts**

**Defroster fans**

**Cruise control**

**12-volt powerpoints**

**Map lights**

**Power steering w/tilt wheel**

**Dash workstation**

**Power mirrors w/defrost and sideview cameras**

**MCD solar/blackout powered front shade**

**Privacy curtain driver and passenger windows**

**Solar shades driver and passenger windows**

**Convenience tray (engine cover)**

**Passenger-side curb view window**

**Instrument panel**

**Cab sound control package**

**Motor cover**

**Trim panel**

## OPTIONAL EQUIPMENT

**Passenger seat w/footrest**

**JBL premium audio tuned 360-watt amplifier w/11 speakers including subwoofer**

## Interior

**Dining table/buffet/chairs w/retractable 48" HDTV (37F)**

**Entertainment center w/48" HDTV (35P, 38Q)**

**Amplified digital HDTV antenna system**

**Blu-ray™ Home Theater Sound System amplifier, CD/DVD player, iPhone®/iPod dock w/video, receiver, 5 speakers, and subwoofer**

**OnePlace® systems center**

**Satellite system ready (lounge and bedroom)**

**MCD solar/blackout roller shades (in select areas)**

**Contour™ windows frameless, dual-paned**

**LED ceiling and accent lighting**

**Soft vinyl ceilings**

**HDMI Matrix central video selection system**

**Powered ventilator fan (galley)**

**Powered roof vent(s) (bath)**

**Washer/dryer prep**

**Electric fireplace (38Q)**

**Assist bar**

## OPTIONAL EQUIPMENT

**Rest Easy® sectional sofa, dual control (38Q)**

**Rest Easy sofa, dual control (35P, 37F)**

**Winegard Trav'ler® automatic HDTV antenna system**

**Stackable washer/dryer**

**Lounge chair (37F, 38Q)**

**Vinyl floor covering throughout**

**Ottomans (2) (38Q)**

## Galley

**Corian® solid-surface high-gloss countertop, flip-up extension, and decorative backsplash**

**Microwave/convection oven w/range fan and touch controls**

**3-burner range top w/storage below**

**Corian sink and range covers**

**4-door 2-way refrigerator/freezer w/icemaker (35P, 37F)**

**French door residential refrigerator, counter-depth, stainless steel, interior water dispenser, icemaker, and glide-out bottom drawer freezer (38Q)**

**Cold water filtration system**

**Pantry (38Q)**

## OPTIONAL EQUIPMENT

**French door residential refrigerator, counter-depth, stainless steel, interior water dispenser, icemaker, and glide-out bottom drawer freezer (37F) (includes 4 AGM batteries)**

**3-burner range w/oven**

## Bath

**Textured glass shower door**

**Flexible showerhead**

**Corian countertop w/decorative backsplash**

**Skylight (35P)**

**Water pump switch(es)**

**Porcelain toilet w/foot pedal and sprayer**

**Electric toilet (37F rear bath)**

**Linen cabinet (35P, 37F)**

**Medicine cabinet**



Robe hook(s) (35P)

Tissue holder

Towel bar(s)

Towel ring(s)

## Bedroom

**Powered king bed** w/InnoMax® Natural Reserve Freedom Air mattress w/remotes (37F, 38Q)

**King bed** w/innerspring mattress (35P) (storage below)

**28" HDTV** (37F)

**32" HDTV** (35P, 38Q)

**Bedsread, pillow shams, and pillows**

**Ceiling fan**

**Headboard**

### OPTIONAL EQUIPMENT

**King InnoMax® Natural Reserve Freedom Air mattress** w/remotes (35P)

**Queen InnoMax® Natural Reserve Freedom Air mattress** w/remotes (35P)

**Queen bed** w/innerspring mattress (35P) (storage below)

**Powered queen bed** w/InnoMax® Natural Reserve Freedom Air mattress w/remotes (37F, 38Q)

**Vinyl tile throughout** (slideouts carpeted)

## Exterior

**Driver's side service light**

**TriMark® KeyOne™ lock system**

**Lower front protective mask**

**Porch light** w/interior switch

**Automatic entrance steps**

**Powered entrance awning** (38Q)

**Powered patio awning** w/LED lighting and metal wrap

**Ladder**

**Front and rear mud flaps**

**Lighted storage compartments** (in select compartments)

### OPTIONAL EQUIPMENT

**Exterior Entertainment Center 32" HDTV**

## Heating & Cooling System

**40,000 BTU low-profile 2-speed furnace**

**TrueAir® Maximum Comfort A/C** 2-13,500 BTU, low-profile air conditioners w/heat pumps

## Electrical System

**AC/DC distribution system**

**45-amp. converter/charger** (35P)

**Service Center** cable TV input, 50-amp. power cord, QuickPort® service connection hatch, portable satellite dish hookup

**Cummins Onan® Energy Command™ automatic generator start system**

**Exterior AC duplex receptacle**

**5,500-watt Cummins Onan Marquis Gold™ generator**

**1,000-watt inverter** (35P)

**2,000-watt inverter/charger** (37F, 38Q)

**PowerLine® Energy Management System**

**Auxiliary start circuit**

**2 deep-cycle Marine/RV Group 31 batteries** (35P, 37F)

**4 deep-cycle Marine/RV sealed AGM batteries** (38Q)

**Battery disconnect systems** (coach and chassis)

**Automatic dual-battery charge control**

**Generator/shoreline automatic changeover switch**

**Exterior antenna jack**

### OPTIONAL EQUIPMENT

**100-watt solar panel/battery charger**

**300-watt solar panel/battery charger**

## Plumbing System

**LPG accessory connection** (patio area)

**Service Center** QuickPort service connection hatch, exterior wash station w/pump switch, pressurized city water hookup w/diverter valve, drainage valves, 10' sewer hose

**Black tank flushing system**

**Permanent-mount LP tank** w/gauge

**TrueLevel™ holding tank monitoring system**

**On-demand water pump**

**Heated holding tank compartment**

**Winterization Package** water heater bypass valve and siphon tube

**10-gallon water heater** 110-volt/LP w/motoraid auxiliary hot water supply system and auxiliary auto heater

**Gravity water tank fill** w/lockable door

## Safety

**Child seat tether anchor** (dinette) (35P)

**LP, smoke, and carbon monoxide detectors**

**10 BC fire extinguisher**

**Ground fault interrupter**

**Fog lamps**

**High-mount brake lamps**

## Warranty<sup>7</sup>

**12-month/15,000-mile basic limited warranty<sup>8</sup>**

**36-month/36,000-mile limited warranty on structure<sup>8</sup>**

**10-year limited parts-and-labor warranty on roof skin<sup>8</sup>**

### FOOTNOTES

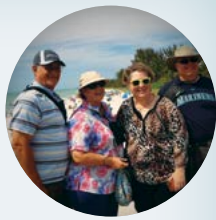
1. The height of each model is measured to the top of the tallest standard feature and is based on the curb weight of a typically equipped unit. The actual height of your vehicle may vary by several inches depending on chassis or equipment variations. Please check with your dealer for further information.
2. Floorplans feature a wide-body design - over 96". In making your purchase decision, you should be aware that some states restrict access on some or all state roads to 96" in body width. Before making your purchase decision, you should confirm the road usage laws in the states of interest to you.
3. The load capacity of your motorhome is designated by weight, not by volume, so you cannot necessarily use all available space when loading your motorhome.
4. Capacities are based on measurements prior to tank installation. Slight capacity variations can result due to installation applications.
5. Capacities shown are tank manufacturer's listed water capacity (W.C.). Actual filled LP capacity is 80% of listing due to overfilling prevention device on tank.
6. Actual towing capacity is dependent on your particular loading and towing circumstances which includes the GVWR, GAWR, and GCWR as well as adequate trailer brakes. Please refer to the Operator's Manual of your vehicle for further towing information.
7. See separate chassis warranty.
8. See your dealer for complete warranty information.

NA Not Available

Not all items available in combination. See dealer for details.

Winnebago's® continuing program of product improvement makes specifications, equipment, model availability, and prices subject to change without notice. Published content reflects the most current product information at time of printing. Please consult your dealer for individual vehicle features and specifications.





Let us host  
your next

# Adventure



[WGOAdventures.com](http://WGOAdventures.com)



**WINNEBAGO**  
RV INSURANCE



From RV to personal insurance, Winnebago RV Insurance can provide all the coverage and services you need to feel at home on the road.

**For more information:**  
**(800) 642-4892**

Connect with Winnebago (Click one of the following)



Like us



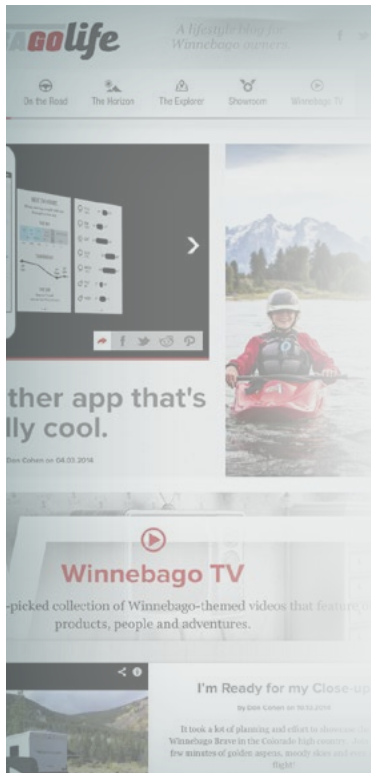
Follow us



Watch us

## WinnebagoInd.com Has All The Answers

Visit [WinnebagoInd.com](http://WinnebagoInd.com) on your computer, smartphone, or tablet for the latest product information and updates.



## Welcome to GoLife!

Visit our lifestyle blog for motorhome news, personal travelogues, and community stories.

**WinnebagoLife.com**

**GoLife**



# **PREFERRED CARE PROGRAM**

We back our motorhomes with best-in-class support both before and after the sale:

- 12-month/15,000-mile basic limited warranty
- 36-month/36,000-mile limited warranty on structure
- 10-year limited parts-and-labor warranty on fiberglass roof
- Complimentary 24-hour roadside assistance program



- TripSaver® Fast Track Parts guarantees that in-stock warranty parts ship directly to your dealer within 24 hours
- National dealer service network



For more information:  
**WGOService.com**



# **WINNEBAGO**

## **CONTACT US**

### **GENERAL INQUIRIES**

Corporate Switchboard  
(641) 585-3535

### **CURRENT PRODUCT OWNER AND SERVICE-RELATED INQUIRIES**

(800) 537-1885  
or @winnebagoind.com

### **NEW VEHICLE SALES INQUIRIES**

sales@winnebagoind.com

### **FAX**

(641) 585-6966

### **POSTAL ADDRESS**

Winnebago Industries, Inc.  
P.O. Box 152  
Forest City, IA 50436

### **STREET ADDRESS**

Winnebago Industries, Inc.  
605 West Crystal Lake Road  
Forest City, IA 50436



## **Join the Club, Join the Fun**

Here's the perfect way to begin your life on the road as the owner of a new Winnebago – by joining the exclusive WIT Club. Start your adventure with other fun-loving WIT Club members from across the country and get the most out of your new Winnebago motorhome.



### **Members enjoy:**

- Caravans and rallies
- Newsletters
- Local and state group activities
- RV travel benefits

See more at  
**WITClub.com**



## **Grand National Rally**

Each year, thousands of Winnebago owners descend upon Forest City, Iowa. Rally-goers enjoy an unforgettable week reconnecting with friends, taking tours, participating in activities, and more. Join the adventure next July!